



# **BELZONA®**

# **1131**

## **Self-Lubricating Metal Repair System**

Machinery and equipment parts often come in close contact with one another, causing friction, which can lead to wear and tear. When repairs are required, conventional high performance repair materials, although effective in most respects, do not have low friction surfaces, and so are not ideal for such situations. Belzona® 1131 is a two component repair and maintenance compound, possessing self lubricating properties. It has a unique micro-porous structure to trap and hold lubricating oil, minimizing friction and wear at start-up. Belzona is ideal for many applications, such as:

- SHAFT SLEEVES
- BEARINGS
- BUSHINGS
- GUIDES
- SLIDEWAYS
- PIPE SUPPORTS

Belzona® 1131 bonds to virtually any surface including:

- |                       |                   |
|-----------------------|-------------------|
| • STEEL               | • STAINLESS STEEL |
| • ALUMINUM            | • GLASS           |
| • COPPER              | • CONCRETE        |
| • FIBERGLASS LAMINATE | • BRASS           |

With all of these choices, Belzona® 1131 is the first choice cold curing compound for dynamic applications.



SHAFT SLEEVES



BEARINGS



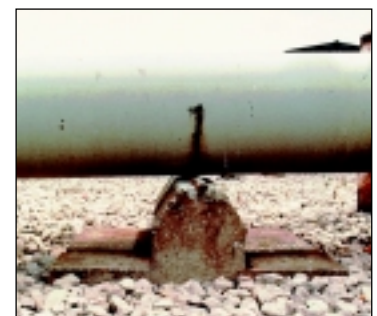
BUSHINGS



ABRADABLE SURFACES



SLIDEWAYS



PIPE SUPPORTS

## **The Unconventional Alternative.**

**Belzona Polymeric Ltd.** Harrogate, HG1 4AY, England  
 Fax: +44 (0) 1423 505967 • Tel: +44 (0) 1423 567641  
 E-mail: Com@Belzona.co.uk

**Belzona Inc.** Miami, Florida 33172, USA  
 Fax: (305) 599-1140 • Tel: (305) 594-4994  
 E-mail: Belzona@Belzona.com





BELZONA® 1000 SERIES METALLIC POLYMERS

### **Simplicity in Use**

- No special tools or skills required. Easy application with spatula, specially designed applicator (included) or injection pistol.
- Simple and tolerant mixing ratio; mix just the right amount for the job.

### **Safety in Use**

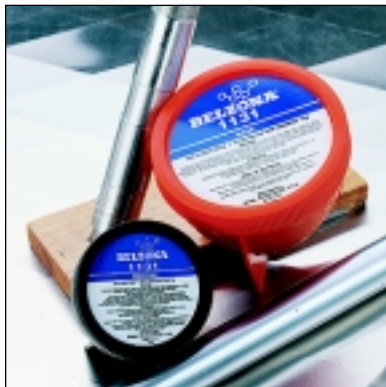
- Cold temperature cure ensures no fire risk.
- No shrinkage, expansion or distortion during cure ensures no stress or strain on repaired components.
- Excellent electrical insulation characteristics enables use with complete safety on dissimilar metals where bimetallic corrosion is a problem.

### **Versatility in Use and Application**

- Apply thin or thick sections in one operation.
- Will not slump when applied at up to 1 inch (25 mm) on vertical surfaces.
- Stays in place even when applied on overhead surfaces.
- Bonds to almost any surface including steel, aluminum, copper, brass, stainless steel, fiberglass laminate, concrete and glass.
- Moldable to precise contours.
- Machinable with conventional tipped tools.

### **Permanency in Service**

- The porous oil-holding surface of the product minimizes wear at start-up and reduces the risk of seizure in the event of lubricant starvation.
- High mechanical strength.
- Excellent heat resistance.
- Outstanding resistance to a broad range of chemicals including inorganic acids, alkalis, hydrocarbons, hydraulic and lubricating oils, animal and vegetable oils and fats, alcohols and most aqueous salt solutions and emulsions.



AVAILABLE IN 1 KG. (2.2 LBS.) UNIT SIZE.



BS EN ISO 9002 - 1994  
Certificate No. Q/09335

